

A PROJECT BY



VEER
GROUP

&



Samarth.
The trust in built



VEER

AMANTA

2 BHK APARTMENTS

A PROJECT BY



&



Welcome!

WE ARE VEER GROUP & SAMARTH GROUP.

Kindly accept our sincere gratitude for visiting us. Samarth Group enjoys a proud credit of developing high standard, quality, best-in-class real estate. Samarth Group offers most of modern lifestyle amenities with superior development skills that display through its structural and architectural excellence. Samarth Group offers the highest class of living with all lush amenities a regal would require.

At Samarth Group, we remain dedicated to Excellence in Construction, every day and on every project. We have a genuine commitment to quality and safety that we've upheld for over thirty successful years.

Samarth Group has always promoted diversity and inclusion. We believe that a diverse working environment drives innovative solutions for our clients and improves our ability to perform in varying environments.





VEER AMANTA

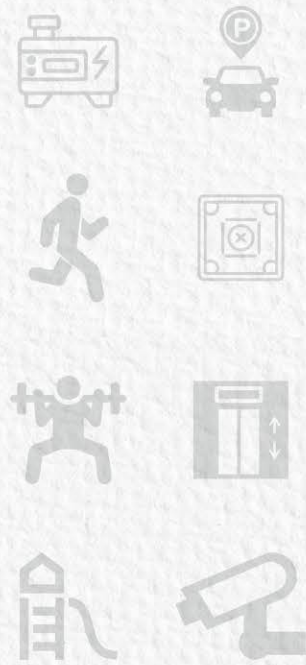


VEER AMANTA

amenities

VEER AMANTA 2 BHK APARTMENTS

- GENERATOR BACK UP FACILITY
- BASEMENT PARKING
- 1 CAR ALLOTTED PARKING
- GYM
- LANDSCAPING
- GAZEBO SEATING
- JOGGING TRACK
- BANQUET HALL
- PICK UP & DROP STAND
- CHILDREN PLAY AREA
- INDOOR GAME
- CCTV CAMERA
- 1 AC. IN MASTER BEDROOM
- EXTERIOR WEATHER SHIELD MAX PAINT WITH TEXTURE
- GORGEOUS ENTRANCE GATE & ATTRACTIVE ENTRANCE FOYER
- ALUMINUM SECTION
- AUTOMATIC AUTO DOOR ELEVATORS
- 3 LAYER WATER PROOFING TERRACE & BATH TOILET
- GROUND FLOOR FREE WI-FI ZONE
- GAS GEYSER & GAS LINE



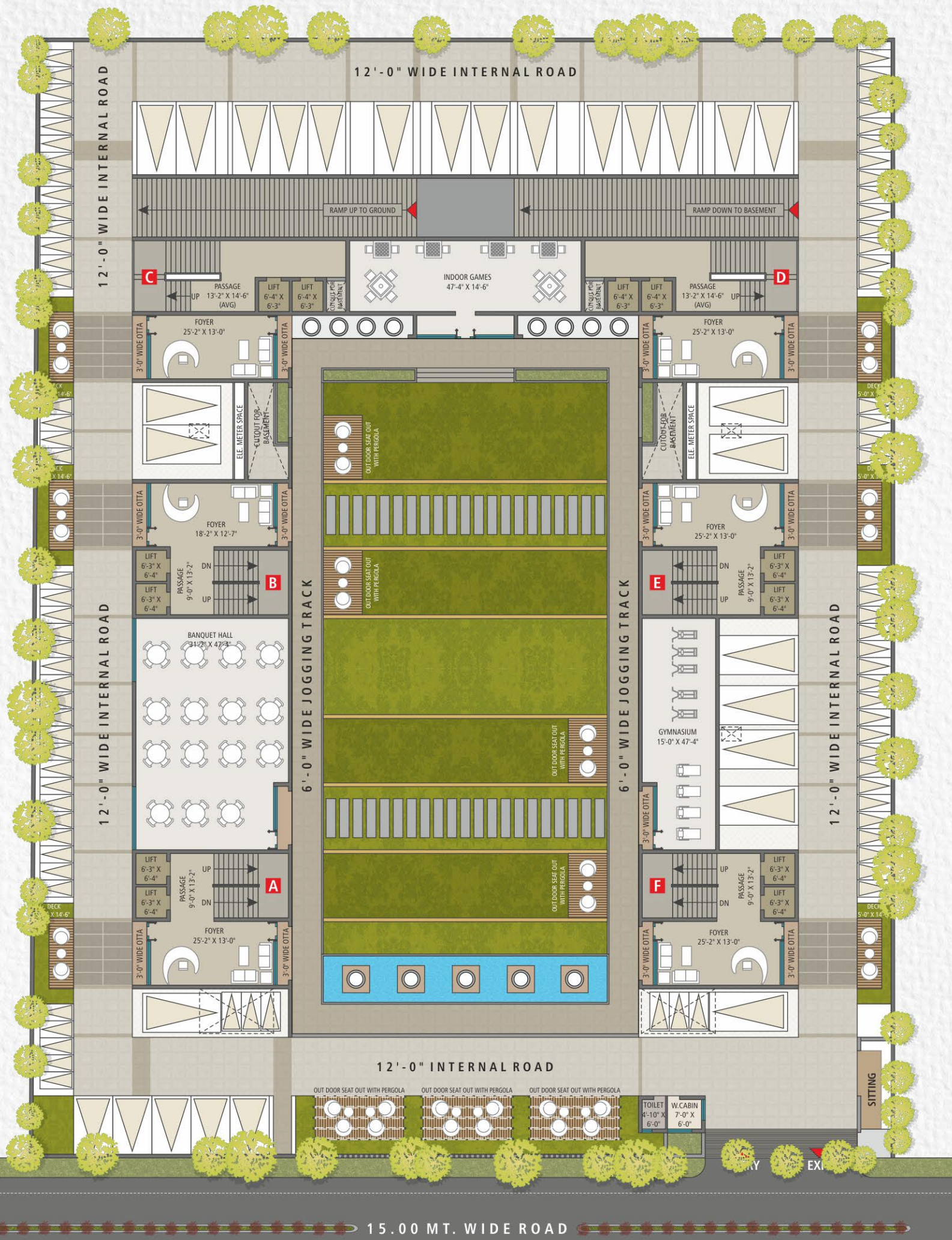
If you can read between the lines, then you can also find peace-park between two buildings. Special wooden sit-outs and manicured grass carpets are focal points to find peace and re-energize.



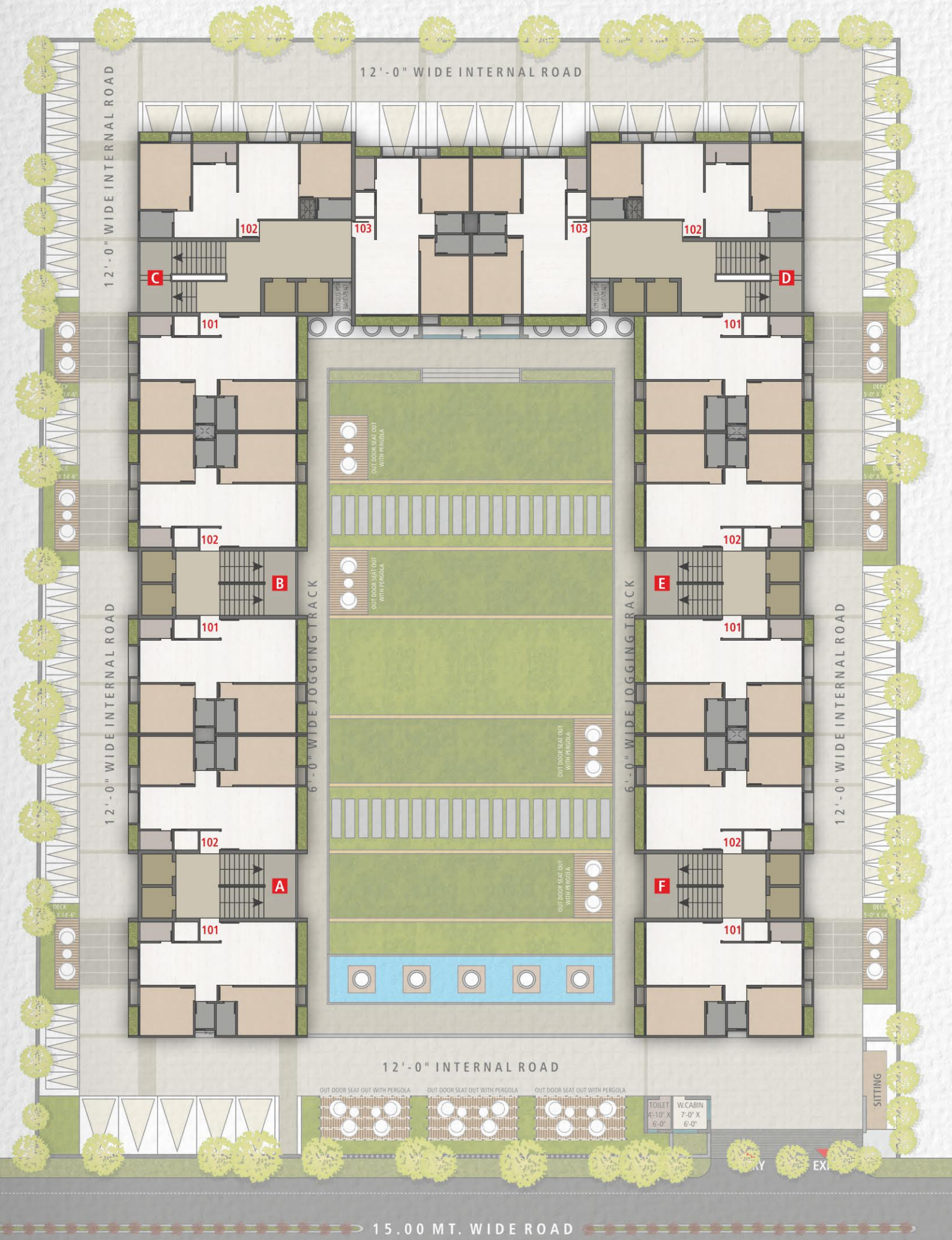
BEAUTIFUL LANDSCAPED GARDEN



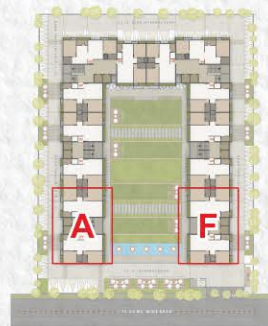
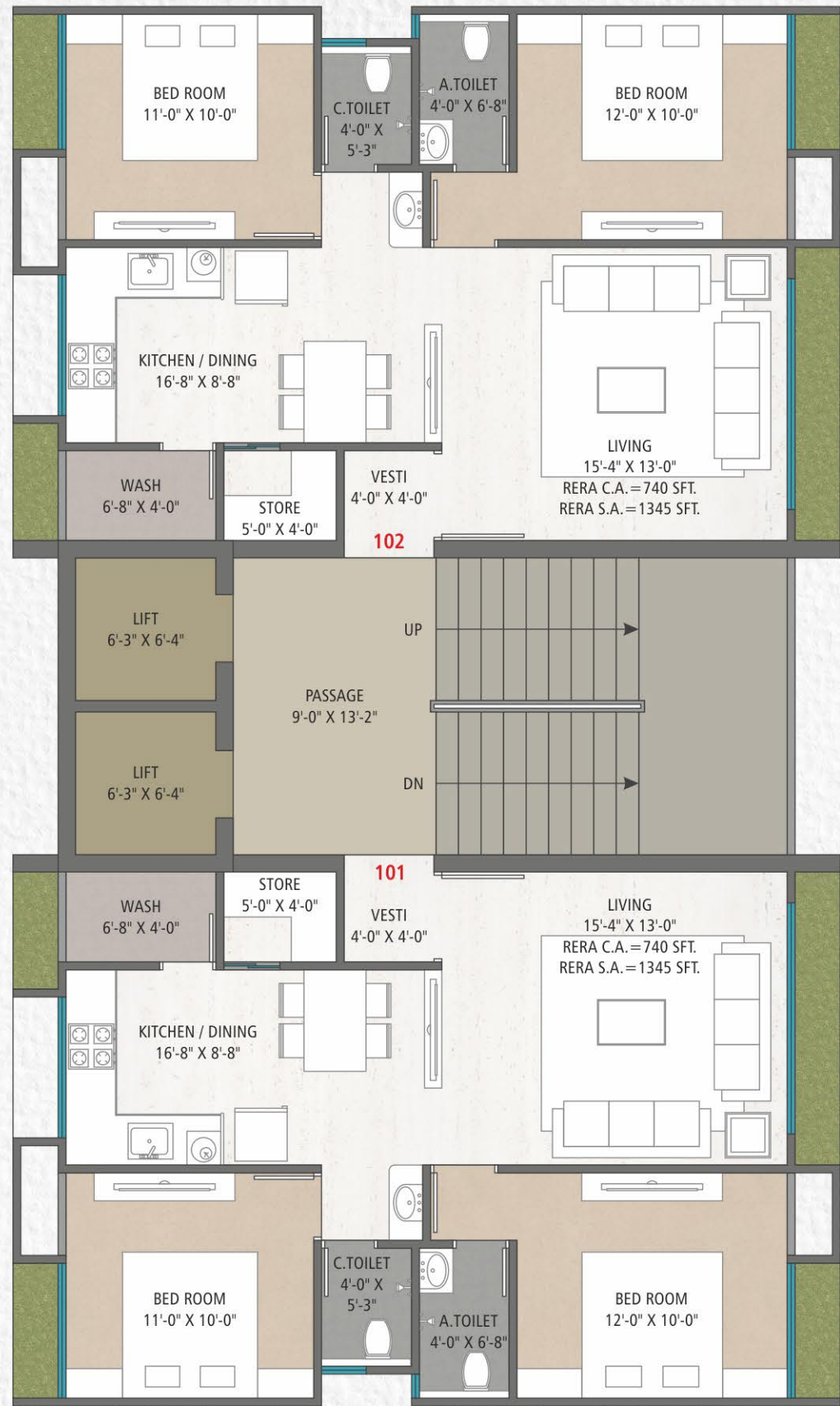
ENTRANCE FOYER



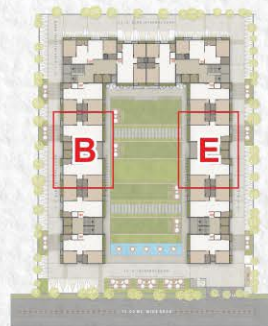
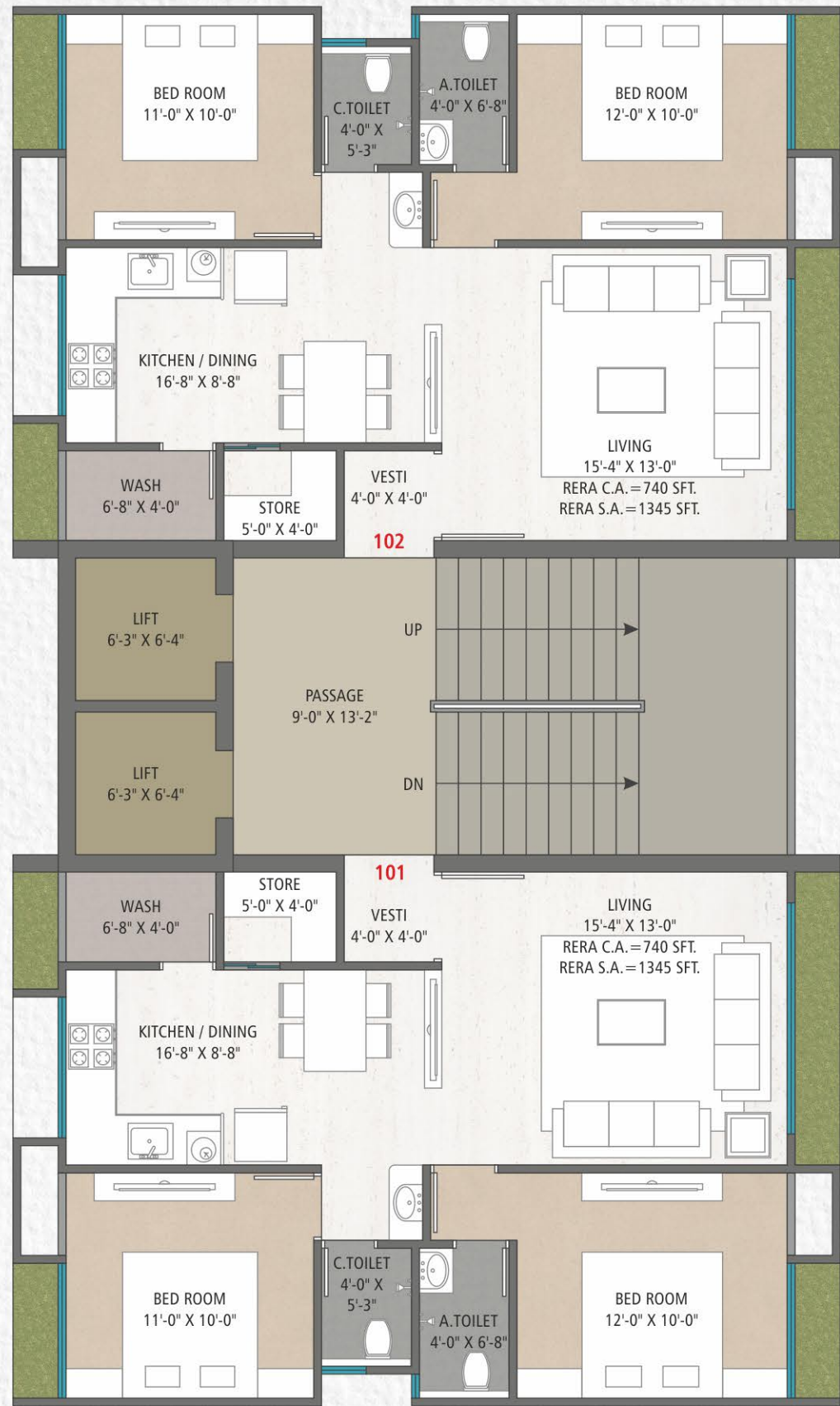
N
GROUND FLOOR PLAN



N
TYPICAL FLOOR PLAN



VEER
AMANTA
 2 BHK APARTMENTS



BUILDING B & E



BUILDING C & D

environmentally responsive

**VEER
AMANTA**
2 BHK APARTMENTS

Veer Amanta keeps buildings
more environmentally responsive
and welcoming.

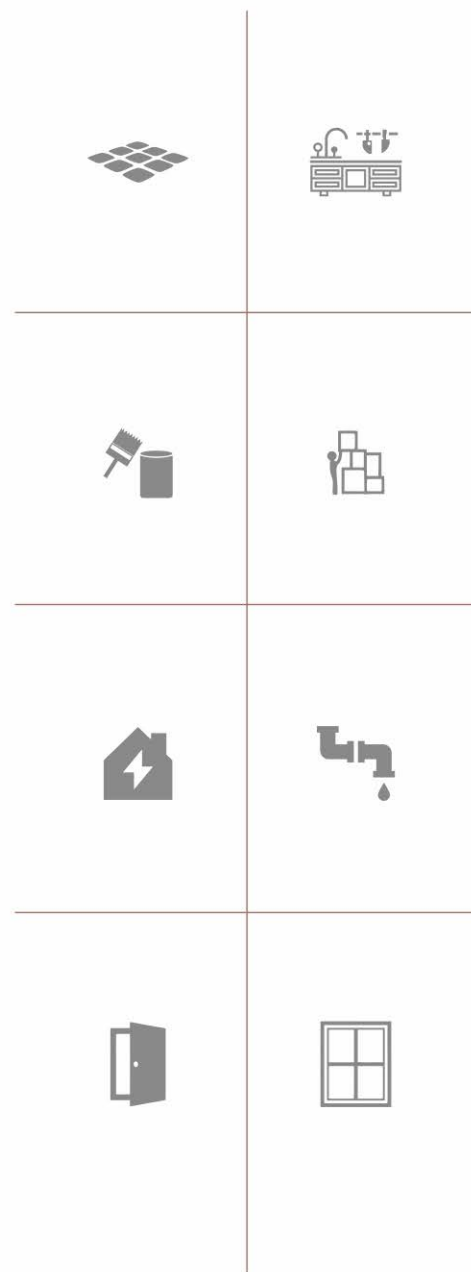


Veer Amanta keeps buildings more environmentally responsive and welcoming,

VEER
AMANTA
2 BHK APARTMENTS



SITTING AREA



SPECIFICATIONS

BUILDING INTERNAL

■ Flooring

- Vitrified tiles flooring 24" X 24" in hall, kitchen and 24" X 24" in all bedroom.

■ Internal wall

- Mala plaster with birla white finish.

■ Electrification

- ISI standard concealed copper wiring with sufficient point in all rooms.
- 24 hour auto-generator of 1.5 amp backup for each flat.
- A.C., T.V. point.
- Standard make modular switches & accessories.
- Municipal water supply.
- Gujarat gas connection point for kitchen and geyser point.

■ Kitchen & Storage

- Granite kitchen platform with standard company sink and decorative glazed tiles on wall up to ceiling level.
- Common wash basin.
- Kota flooring and glazed tiles dado with granite sill tip in wash area.
- 2 gas line points, one for kitchen & second for gas geyser in wash area.

■ Bath Fitting & Plumbing

- Anti-skid tiles flooring and well-designed wall tiles up to lintel level.
- Single level concealed diverter with shower.
- Standard quality sanitary fitting.
- Western W.C. in all bathroom.
- CPVC / UPVC piping for plumbing.
- Hot & cold water line in all bathrooms of flat.
- Openable ceiling in all bathroom & wash room area.

■ Door & Windows

- Attractive main door with salwood frame.
- Internal flush door with granite frame.
- Standard hardware fitting.
- Standard anodized Domal aluminum section windows with single vision reflective glass.
- Windows with granite sill inside with marble stone sill outside.
- Door lock of standard make.



specification

CAMPUS FEATURE

- Modern entrance gate with elegant compound wall & security cabin.
- Gorgeous entrance foyer.
- 1 allotted car parking with single basement.
- Security system with CCTV camera in common areas including lift.
- Children play area with latest equipment.
- Open yoga & meditation zone.
- Bore well for rain water harvesting.
- Lush green modern designed landscape garden.
- Tree plantation in campus.
- Internally RCC trimix finished road with block paving.
- Installed dustbins in campus to keep campus clean.

BUILDING EXTERNAL

- Earthquake resistant RCC frame structure.
- Double coat plaster with texture on external wall.
- Weather shield MAX / APEX ultima paint on external wall.
- 24 hour auto-generator backup for common area & 1.5 amp backup for each flat.
- Well-designed furnished building entrance foyer with reception & waiting lounge.
- Staircase & lift lobby finished with granite & vitrified tiles.
- 2 elevators with auto door feature in each building.
- S.M.C. water with underground & overhead water tank.
- Separate bore well for each building.
- 3 layer waterproofing with chemical treatment & china mosaic on terrace.
- Fire safety as per GDCR norms and execution as per details given by fire consultant.
- Attractive balcony lighting.

LOCATION MAP



VEER AMANTA

2 BHK APARTMENTS

A PROJECT BY



Site Address: Veer Amanta, F.P.-61, T.P.-9, Opp. Shavion, Gauravpath road, Palanpore, Surat

Contact: +91 94284 36007 | +91 63572 88000 | +91 63572 99000

website: www.veeramanta.com | E-mail: info@veeramanta.com

ARCHITECT



WE REQUEST

- Stamp duty, registration charges, legal charges, society maintenance charges (from the date of BUC) etc. shall be borne by the purchaser.
- GST, TDS & all other Taxes levied in future will be borne by the purchaser.
- Any Additional charges or Duties levied by the government / local authorities during or after the completion of the scheme like SMC Tax, will be borne by the purchaser.
- In the interest continual developments in design & quality of construction, the developer reserves all rights to make any changes in the scheme including technical specification, designs, planning, layout & all purchaser shall abide by such changes.
- Changes / Alteration of any Nature including elevation, exterior color scheme, balcony Grill or any other changes affecting the overall design concept & lookout of the scheme are strictly not permitted during or after the completion of the scheme.
- Any RCC member (beam, column & slab) must not be damaged during your interior work.
- Low-voltage cables such as telephone, TV and Internet cables shall be strictly laid as per consultant's service drawings with prior consent of developer / builder office.
- No wire / cables / conduits shall be laid or installed such that they from hanging formation on the building exterior face.
- Common passage / landscaped area not allowed to be used for personal purpose.
- This brochure is intended only for easy display & information of the scheme and does not form part of legal documents.

LEGAL DISCLAIMER

- * All furniture / objects shown in the plan are for presentation & understanding purpose only. By no means, It will form a part of final deliverable product.
- # All the elements, objects, treatments, materials, equipment & color scheme shown are artisan's impression and purely for presentation purpose. By no means, it will form a part of the amenities, features or specification of our final products.